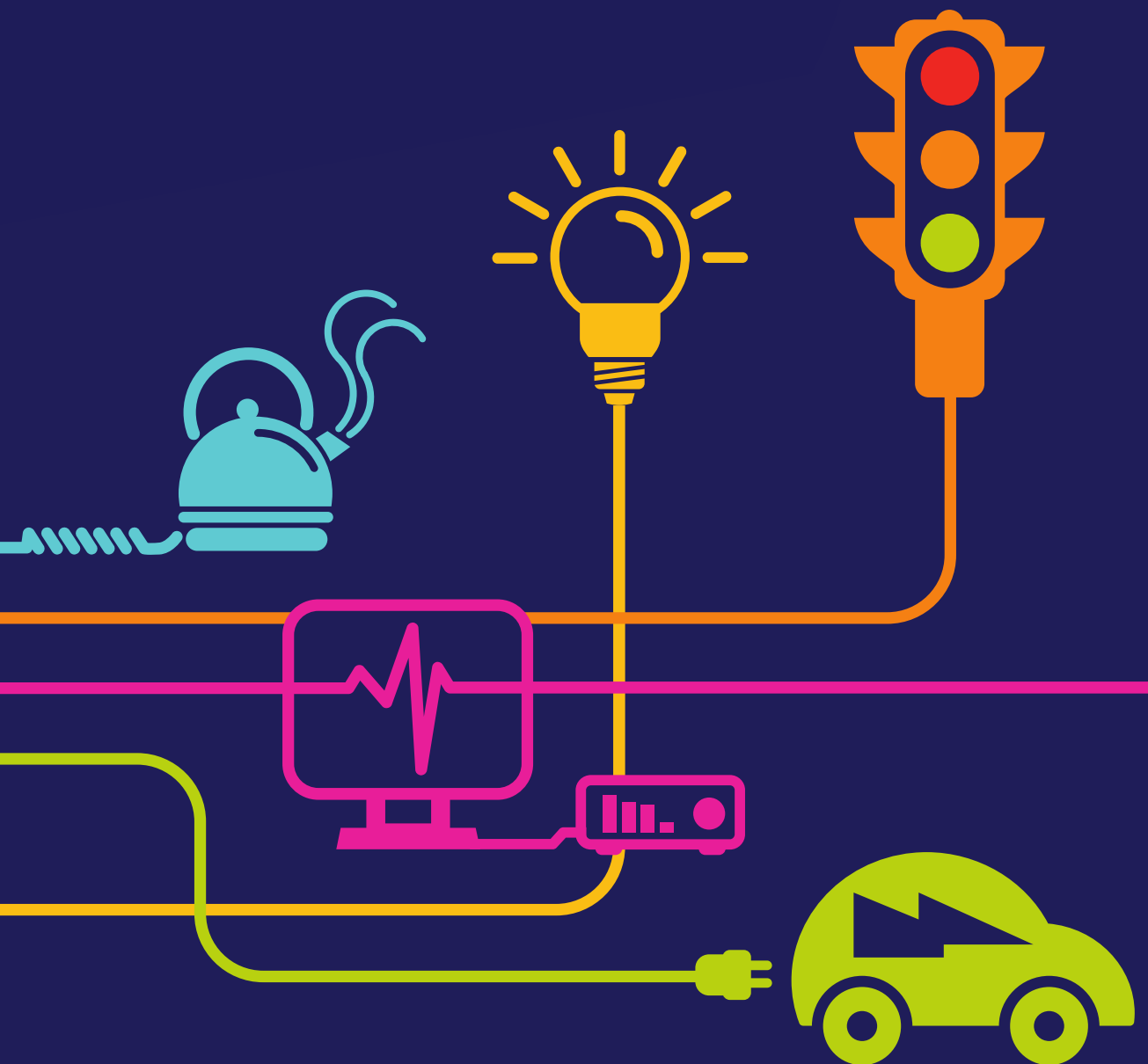


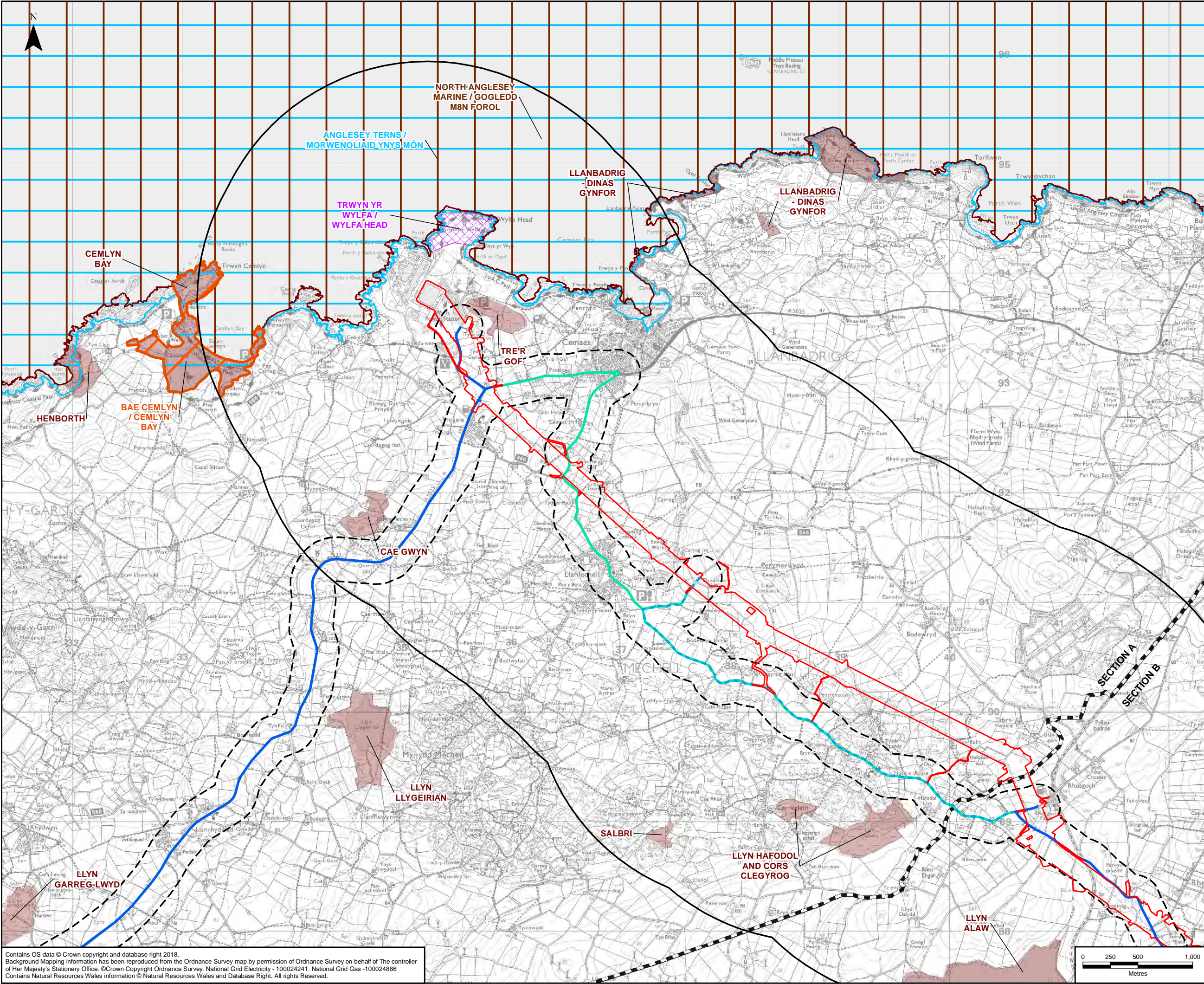
DOCUMENT 5.9.1.1

Statutory Designated Sites Chapter 9 – Figure 1

National Grid (North Wales Connection Project)

*Regulation 5(2)(a) including (l) and (m) of the Infrastructure Planning
(Applications: Prescribed Forms and Procedure) Regulations 2009*





NWC ROUTE LEGEND

LEGEND

- ORDER LIMITS
- 2KM STUDY AREA
- SECTION CUTLINES
- RAMSAR
- SPECIAL AREA OF CONSERVATION (SAC)
- SPECIAL AREA OF CONSERVATION - CANDIDATE SITE (CSAC)
- SPECIAL PROTECTION AREA (SPA)
- SITE OF SPECIAL SCIENTIFIC INTEREST (SSSI)
- NATIONAL NATURE RESERVE (NNR)
- LOCAL NATURE RESERVE (LNR)
- CONSTRUCTION ROUTES
- 200M BUFFER OF CONSTRUCTION ROUTES
- TRUNK ROAD NETWORK
- PRIMARY LIGHT GOODS VEHICLE (LGV) / HEAVY GOODS VEHICLE (HGV)¹
- LGV / TRACTOR TRAILER ROUTE
- PRIMARY LGV ROUTE
- LGV / HGV ENABLING WORKS ROUTE
- LGV / HGV CONTINGENCY ROUTE
- TUNNEL HEAD HOUSE (THH) AND CABLE
- SEALING END COMPOUND (CSEC)
- EMERGENCY ACCESS
- THH / CSEC OPERATION AND MAINTENANCE ROUTE

NOTES

1: LIGHT GOODS VEHICLE (LGV) 3.5T OR BELOW
HEAVY GOODS VEHICLE (HGV) ABOVE 3.5T
2: PRIMARY LGV / HGV ROUTE, LGV / HGV ENABLING WORKS ROUTE, THH / CSEC EMERGENCY ACCESS AND THH / CSEC OPERATION AND MAINTENANCE ROUTE
3: LGV / HGV ENABLING WORKS ROUTE, THH / CSEC EMERGENCY ACCESS AND THH / CSEC OPERATION AND MAINTENANCE ROUTE
4: LGV / HGV ENABLING WORKS ROUTE, LGV / HGV CONTINGENCY ROUTE
5: PRIMARY LGV ROUTE, LGV / HGV ENABLING WORKS ROUTE, THH / CSEC EMERGENCY ACCESS AND THH / CSEC OPERATION AND MAINTENANCE ROUTE
6: THH / CSEC EMERGENCY ACCESS AND THH / CSEC OPERATION AND MAINTENANCE ROUTE
7: ONLY THOSE SITES WHICH FALL WITHIN THE STUDY AREA OR HAVE POTENTIAL FOR PATHWAYS FOR EFFECTS ARE INCLUDED WITHIN APPENDIX 9.2 DESIGNATED SITES INFORMATION (DOCUMENT 5.9.2.2).

A	23/07/2018	ENVIRONMENTAL STATEMENT	AB	LS	NL
Rev	Date	Description	GIS	Chk	App

nationalgrid

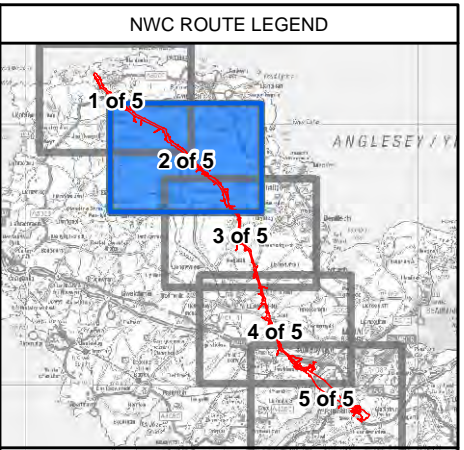
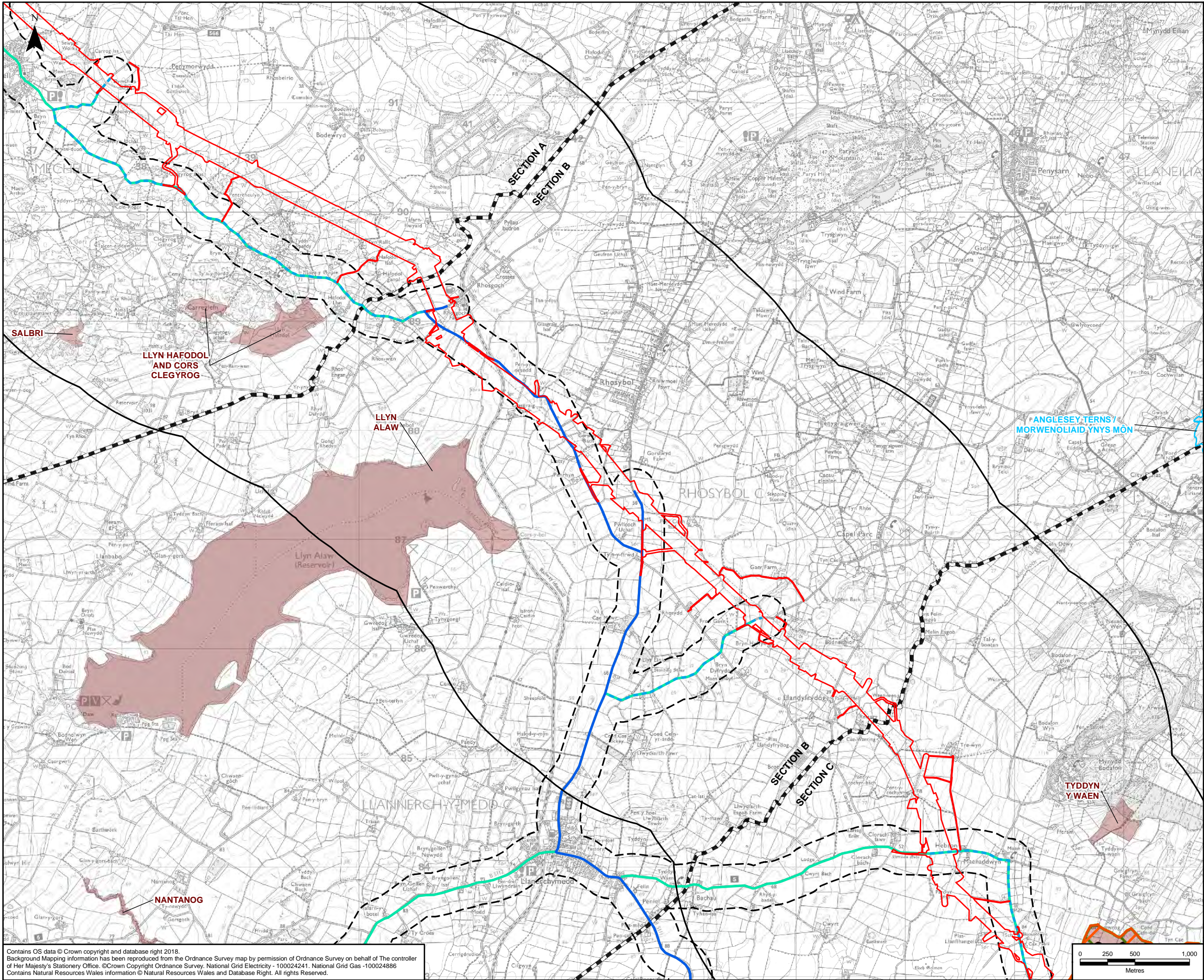
Scheme: NORTH WALES CONNECTION PROJECT

Document Number: 5.9.1.1

Document Title: FIGURE 9.1
STATUTORY DESIGNATED SITES
SECTION A

Creator: AB	Date: 23/07/2018	Checker: LS	Date: 23/07/2018	Approver: NL	Date: 23/07/2018
Document Type: FIGURE	Scale: 1:32,000	Format: A3	Sheets: 1 of 5	Rev: A	

Contains OS data © Crown copyright and database right 2018.
Background Mapping information has been reproduced from the Ordnance Survey map by permission of Ordnance Survey on behalf of The controller of Her Majesty's Stationery Office. © Crown Copyright Ordnance Survey, National Grid Electricity - 100024241, National Grid Gas - 100024886
Contains Natural Resources Wales information © Natural Resources Wales and Database Right. All rights Reserved.



LEGEND

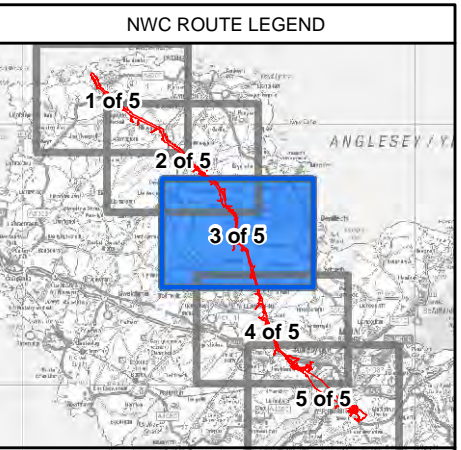
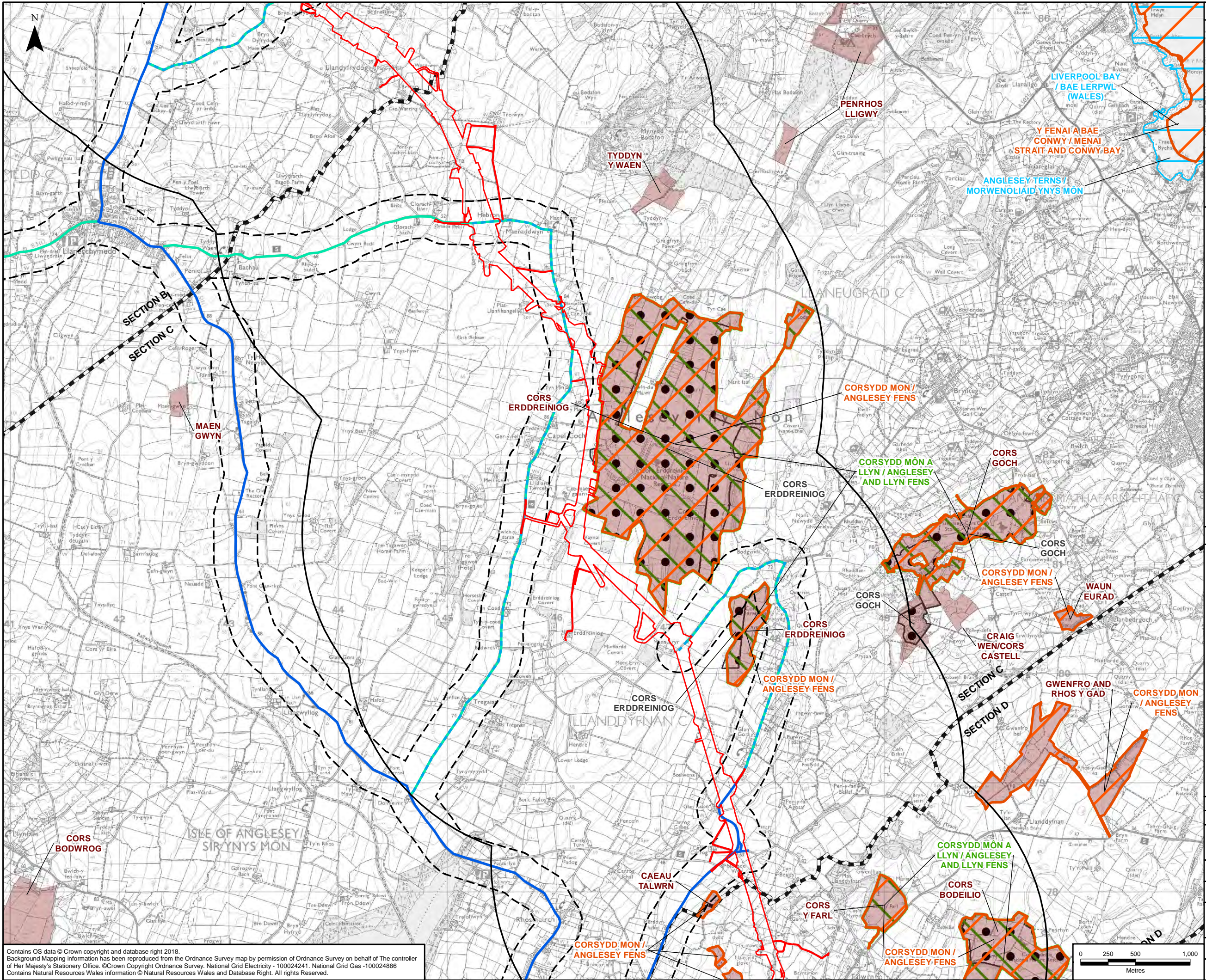
- ORDER LIMITS
- 2KM STUDY AREA
- SECTION CUTLINES
- RAMSAR
- SPECIAL AREA OF CONSERVATION (SAC)
- SPECIAL AREA OF CONSERVATION - CANDIDATE SITE (CSAC)
- SPECIAL PROTECTION AREA (SPA)
- SITE OF SPECIAL SCIENTIFIC INTEREST (SSSI)
- NATIONAL NATURE RESERVE (NNR)
- LOCAL NATURE RESERVE (LNR)
- CONSTRUCTION ROUTES
- 200M BUFFER OF CONSTRUCTION ROUTES
- TRUNK ROAD NETWORK
- PRIMARY LIGHT GOODS VEHICLE (LGV) / HEAVY GOODS VEHICLE (HGV)¹
- LGV / TRACTOR TRAILER ROUTE
- PRIMARY LGV ROUTE
- LGV / HGV ENABLING WORKS ROUTE
- LGV / HGV CONTINGENCY ROUTE
- TUNNEL HEAD HOUSE (THH) AND CABLE
- SEALING END COMPOUND (CSEC)
- EMERGENCY ACCESS
- THH / CSEC OPERATION AND MAINTENANCE ROUTE

NOTES

1: LIGHT GOODS VEHICLE (LGV) 3.5T OR BELOW
HEAVY GOODS VEHICLE (HGV) ABOVE 3.5T
2: PRIMARY LGV / HGV ROUTE, LGV / HGV ENABLING WORKS ROUTE, THH / CSEC EMERGENCY ACCESS AND THH / CSEC OPERATION AND MAINTENANCE ROUTE
3: LGV / HGV ENABLING WORKS ROUTE, THH / CSEC EMERGENCY ACCESS AND THH / CSEC OPERATION AND MAINTENANCE ROUTE
4: LGV / HGV ENABLING WORKS ROUTE, LGV / HGV CONTINGENCY ROUTE
5: PRIMARY LGV ROUTE, LGV / HGV ENABLING WORKS ROUTE, THH / CSEC EMERGENCY ACCESS AND THH / CSEC OPERATION AND MAINTENANCE ROUTE
6: THH / CSEC EMERGENCY ACCESS AND THH / CSEC OPERATION AND MAINTENANCE ROUTE
7: ONLY THOSE SITES WHICH FALL WITHIN THE STUDY AREA OR HAVE POTENTIAL FOR PATHWAYS FOR EFFECTS ARE INCLUDED WITHIN APPENDIX 9.2 DESIGNATED SITES INFORMATION (DOCUMENT 5.9.2.2).

A	23/07/2018	ENVIRONMENTAL STATEMENT	AB	LS	NL
Rev	Date	Description	GIS	Chk	App
nationalgrid					
Scheme: NORTH WALES CONNECTION PROJECT					
Document Number: 5.9.1.1					
Document Title: FIGURE 9.1 STATUTORY DESIGNATED SITES SECTION B					
Creator: AB	Date: 23/07/2018	Checker: LS	Date: 23/07/2018	Approver: NL	Date: 23/07/2018
Document Type: FIGURE	Scale: 1:32,000	Format: A3	Sheets: 2 of 5	Rev: A	

Contains OS data © Crown copyright and database right 2018.
Background Mapping information has been reproduced from the Ordnance Survey map by permission of Ordnance Survey on behalf of The controller of Her Majesty's Stationery Office. © Crown Copyright Ordnance Survey, National Grid Electricity - 100024241, National Grid Gas - 100024886
Contains Natural Resources Wales information © Natural Resources Wales and Database Right. All rights Reserved.



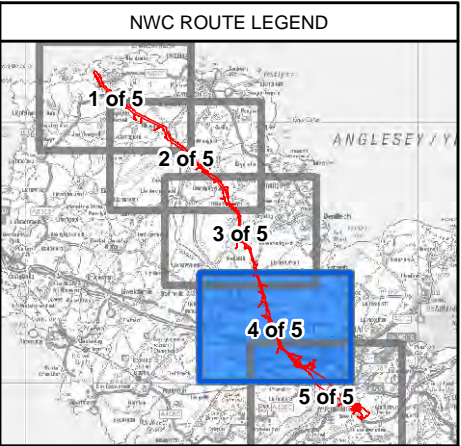
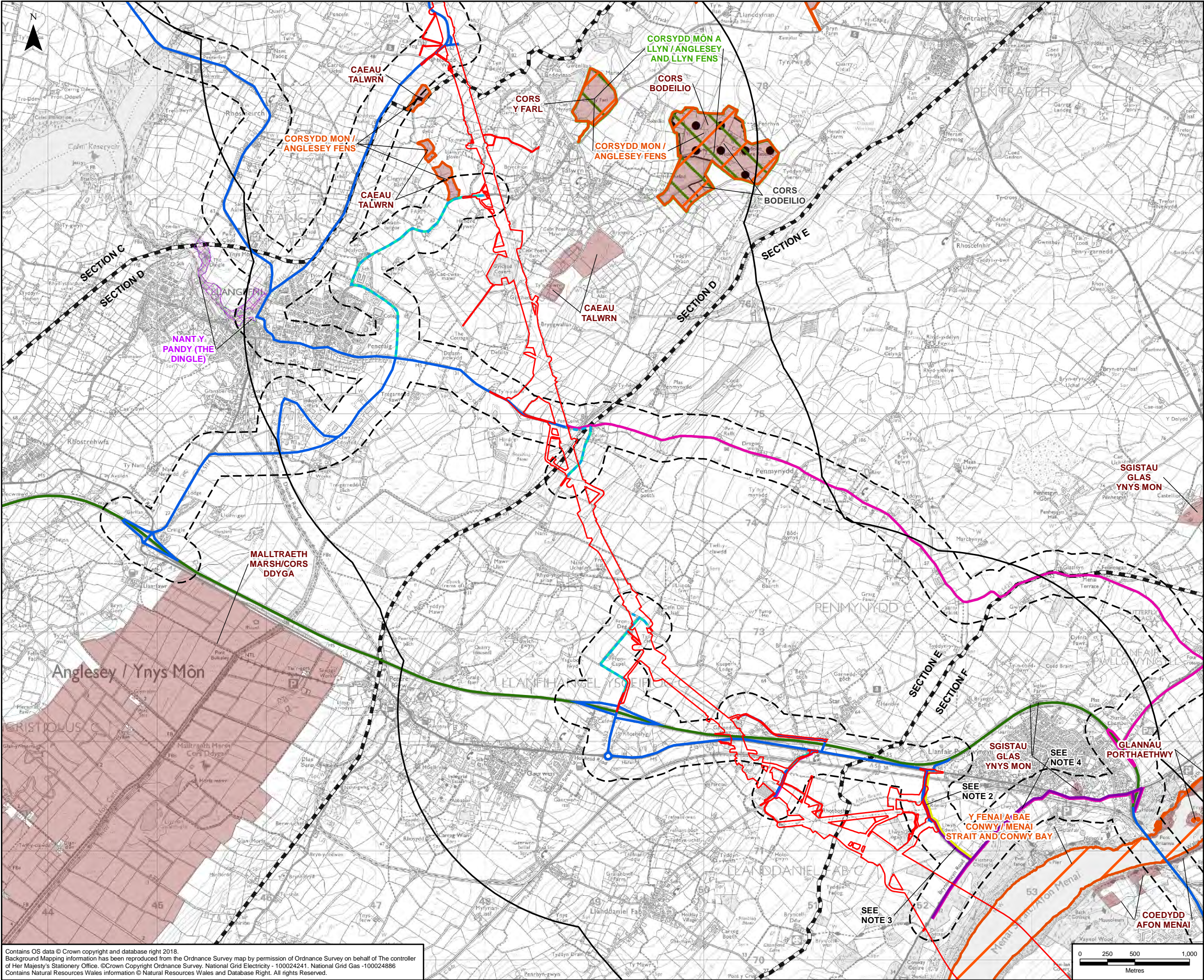
LEGEND	
	ORDER LIMITS - OPTION B
	2KM STUDY AREA - OPTION B
	SECTION CUTLINES
	RAMSAR
	SPECIAL AREA OF CONSERVATION (SAC)
	SPECIAL AREA OF CONSERVATION - CANDIDATE SITE (CSAC)
	SPECIAL PROTECTION AREA (SPA)
	SITE OF SPECIAL SCIENTIFIC INTEREST (SSSI)
	NATIONAL NATURE RESERVE (NNR)
	LOCAL NATURE RESERVE (LNR)
CONSTRUCTION ROUTES	
	200M BUFFER OF CONSTRUCTION ROUTES
	TRUNK ROAD NETWORK
	PRIMARY LIGHT GOODS VEHICLE (LGV) / HEAVY GOODS VEHICLE (HGV) 1
	LGV / TRACTOR TRAILER ROUTE
	PRIMARY LGV ROUTE
	LGV / HGV ENABLING WORKS ROUTE
	LGV / HGV CONTINGENCY ROUTE
	TUNNEL HEAD HOUSE (THH) AND CABLE SEALING END COMPOUND (CSEC) EMERGENCY ACCESS
	THH / CSEC OPERATION AND MAINTENANCE ROUTE

NOTES	
1: LIGHT GOODS VEHICLE (LGV) 3.5T OR BELOW HEAVY GOODS VEHICLE (HGV) ABOVE 3.5T	
2: PRIMARY LGV / HGV ROUTE, LGV / HGV ENABLING WORKS ROUTE, THH / CSEC EMERGENCY ACCESS AND THH / CSEC OPERATION AND MAINTENANCE ROUTE	
3: LGV / HGV ENABLING WORKS ROUTE, THH / CSEC EMERGENCY ACCESS AND THH / CSEC OPERATION AND MAINTENANCE ROUTE	
4: LGV / HGV ENABLING WORKS ROUTE, LGV / HGV CONTINGENCY ROUTE	
5: PRIMARY LGV ROUTE, LGV / HGV ENABLING WORKS ROUTE, THH / CSEC EMERGENCY ACCESS AND THH / CSEC OPERATION AND MAINTENANCE ROUTE	
6: THH / CSEC EMERGENCY ACCESS AND THH / CSEC OPERATION AND MAINTENANCE ROUTE	
7: ONLY THOSE SITES WHICH FALL WITHIN THE STUDY AREA OR HAVE POTENTIAL FOR PATHWAYS FOR EFFECTS ARE INCLUDED WITHIN APPENDIX 9.2 DESIGNATED SITES INFORMATION (DOCUMENT 5.9.2.2).	

A	23/07/2018	ENVIRONMENTAL STATEMENT	AB	LS	NL
Rev	Date	Description	GIS	Chk	App
Scheme: NORTH WALES CONNECTION PROJECT					
Document Number: 5.9.1.1					
Document Title: FIGURE 9.1 STATUTORY DESIGNATED SITES SECTION C OPTION B					
Creator:	Date:	Checker:	Date:	Approver:	Date:
AB	23/07/2018	LS	23/07/2018	NL	23/07/2018
Document Type:	Scale:	Format:	Sheets:	Rev:	
FIGURE	1:32,000	A3	3 of 5 Option B	A	

Contains OS data © Crown copyright and database right 2018.
Background Mapping information has been reproduced from the Ordnance Survey map by permission of Ordnance Survey on behalf of The controller of Her Majesty's Stationery Office. © Crown Copyright Ordnance Survey, National Grid Electricity - 100024241, National Grid Gas - 100024886
Contains Natural Resources Wales information © Natural Resources Wales and Database Right. All rights Reserved.

Document Path: F:\Proposal\3512\North Wales Connection - NG\GIS\02 Maps\Ecology_ES Figs_DCO 2018\ECO_9-1_STAT-DESIG-SITES_PS_20180723_JB.mxd



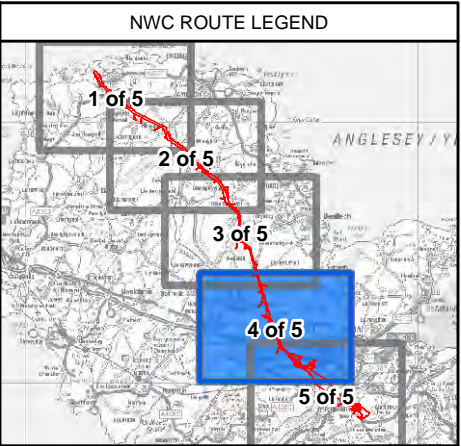
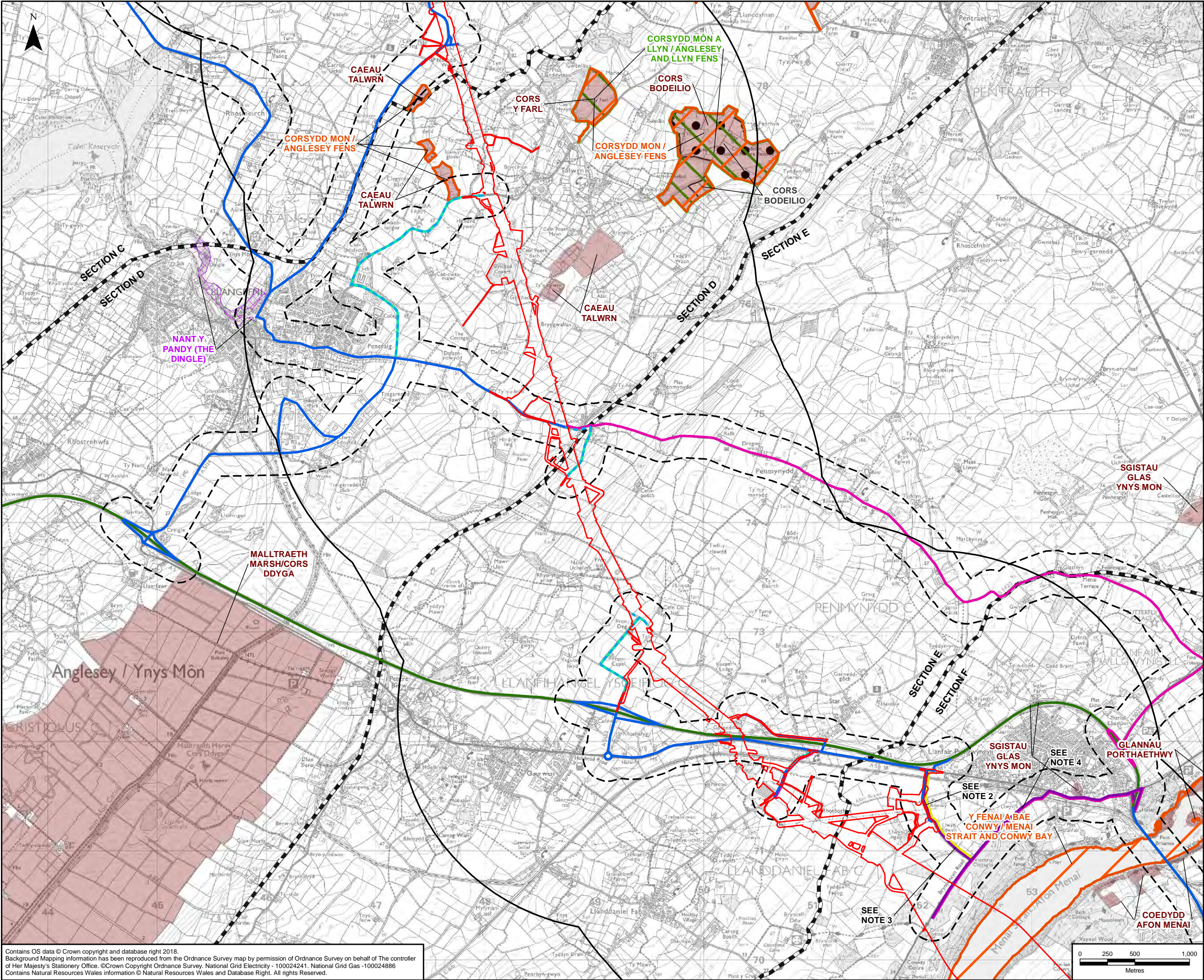
LEGEND

- ORDER LIMITS - OPTION A
- 2KM STUDY AREA - OPTION A
- SECTION CUTLINES
- RAMSAR
- SPECIAL AREA OF CONSERVATION (SAC)
- SPECIAL AREA OF CONSERVATION - CANDIDATE SITE (CSAC)
- SPECIAL PROTECTION AREA (SPA)
- SITE OF SPECIAL SCIENTIFIC INTEREST (SSSI)
- NATIONAL NATURE RESERVE (NNR)
- LOCAL NATURE RESERVE (LNR)
- CONSTRUCTION ROUTES
- 200M BUFFER OF CONSTRUCTION ROUTES
- TRUNK ROAD NETWORK
- PRIMARY LIGHT GOODS VEHICLE (LGV) / HEAVY GOODS VEHICLE (HGV)¹
- LGV / TRACTOR TRAILER ROUTE
- PRIMARY LGV ROUTE
- LGV / HGV ENABLING WORKS ROUTE
- LGV / HGV CONTINGENCY ROUTE
- TUNNEL HEAD HOUSE (THH) AND CABLE
- SEALING END COMPOUND (CSEC) EMERGENCY ACCESS
- THH / CSEC OPERATION AND MAINTENANCE ROUTE

- NOTES**
- 1: LIGHT GOODS VEHICLE (LGV) 3.5T OR BELOW
HEAVY GOODS VEHICLE (HGV) ABOVE 3.5T
 - 2: PRIMARY LGV / HGV ROUTE, LGV / HGV ENABLING WORKS ROUTE, THH / CSEC EMERGENCY ACCESS AND THH / CSEC OPERATION AND MAINTENANCE ROUTE
 - 3: LGV / HGV ENABLING WORKS ROUTE, THH / CSEC EMERGENCY ACCESS AND THH / CSEC OPERATION AND MAINTENANCE ROUTE
 - 4: LGV / HGV ENABLING WORKS ROUTE, LGV / HGV CONTINGENCY ROUTE
 - 5: PRIMARY LGV ROUTE, LGV / HGV ENABLING WORKS ROUTE, THH / CSEC EMERGENCY ACCESS AND THH / CSEC OPERATION AND MAINTENANCE ROUTE
 - 6: THH / CSEC EMERGENCY ACCESS AND THH / CSEC OPERATION AND MAINTENANCE ROUTE
 - 7: ONLY THOSE SITES WHICH FALL WITHIN THE STUDY AREA OR HAVE POTENTIAL FOR PATHWAYS FOR EFFECTS ARE INCLUDED WITHIN APPENDIX 9.2 DESIGNATED SITES INFORMATION (DOCUMENT 5.9.2.2).

A	23/07/2018	ENVIRONMENTAL STATEMENT	AB	LS	NL
Rev	Date	Description	GIS	Chk	App
nationalgrid					
Scheme: NORTH WALES CONNECTION PROJECT					
Document Number: 5.9.1.1					
Document Title: FIGURE 9.1 STATUTORY DESIGNATED SITES SECTION D & E OPTION A					
Creator: AB	Date: 23/07/2018	Checker: LS	Date: 23/07/2018	Approver: NL	Date: 23/07/2018
Document Type: FIGURE	Scale: 1:32,000	Format: A3	Sheets: 4 of 5 Option A	Rev: A	

Contains OS data © Crown copyright and database right 2018.
Background Mapping information has been reproduced from the Ordnance Survey map by permission of Ordnance Survey on behalf of The controller of Her Majesty's Stationery Office. © Crown Copyright Ordnance Survey, National Grid Electricity - 100024241, National Grid Gas - 100024886
Contains Natural Resources Wales information © Natural Resources Wales and Database Right. All rights Reserved.



LEGEND

- ORDER LIMITS - OPTION B
- 2KM STUDY AREA - OPTION B
- SECTION CUTLINES
- RAMSAR
- SPECIAL AREA OF CONSERVATION (SAC)
- SPECIAL AREA OF CONSERVATION - CANDIDATE SITE (CSAC)
- SPECIAL PROTECTION AREA (SPA)
- SITE OF SPECIAL SCIENTIFIC INTEREST (SSSI)
- NATIONAL NATURE RESERVE (NNR)
- LOCAL NATURE RESERVE (LNR)
- CONSTRUCTION ROUTES
- 200M BUFFER OF CONSTRUCTION ROUTES
- TRUNK ROAD NETWORK
- PRIMARY LIGHT GOODS VEHICLE (LGV) / HEAVY GOODS VEHICLE (HGV)¹
- LGV / TRACTOR TRAILER ROUTE
- PRIMARY LGV ROUTE
- LGV / HGV ENABLING WORKS ROUTE
- LGV / HGV CONTINGENCY ROUTE
- TUNNEL HEAD HOUSE (THH) AND CABLE
- SEALING END COMPOUND (CSEC) EMERGENCY ACCESS
- THH / CSEC OPERATION AND MAINTENANCE ROUTE

NOTES

1: LIGHT GOODS VEHICLE (LGV) 3.5T OR BELOW
HEAVY GOODS VEHICLE (HGV) ABOVE 3.5T

2: PRIMARY LGV / HGV ROUTE, LGV / HGV ENABLING WORKS ROUTE, THH / CSEC EMERGENCY ACCESS AND THH / CSEC OPERATION AND MAINTENANCE ROUTE

3: LGV / HGV ENABLING WORKS ROUTE, THH / CSEC EMERGENCY ACCESS AND THH / CSEC OPERATION AND MAINTENANCE ROUTE

4: LGV / HGV ENABLING WORKS ROUTE, LGV / HGV CONTINGENCY ROUTE

5: PRIMARY LGV ROUTE, LGV / HGV ENABLING WORKS ROUTE, THH / CSEC EMERGENCY ACCESS AND THH / CSEC OPERATION AND MAINTENANCE ROUTE

6: THH / CSEC EMERGENCY ACCESS AND THH / CSEC OPERATION AND MAINTENANCE ROUTE

7: ONLY THOSE SITES WHICH FALL WITHIN THE STUDY AREA OR HAVE POTENTIAL FOR PATHWAYS FOR EFFECTS ARE INCLUDED WITHIN APPENDIX 9.2 DESIGNATED SITES INFORMATION (DOCUMENT 5.9.2.2).

A	23/07/2018	ENVIRONMENTAL STATEMENT	AB	LS	NL
Rev	Date	Description	GIS	Chk	App

nationalgrid

Scheme: NORTH WALES CONNECTION PROJECT

Document Number: 5.9.1.1

Document Title: FIGURE 9.1
STATUTORY DESIGNATED SITES
SECTION D & E OPTION B

Creator: AB	Date: 23/07/2018	Checker: LS	Date: 23/07/2018	Approver: NL	Date: 23/07/2018
Document Type: FIGURE	Scale: 1:32,000	Format: A3	Sheets: 4 of 5 Option B	Rev: A	

Contains OS data © Crown copyright and database right 2018.
Background Mapping information has been reproduced from the Ordnance Survey map by permission of Ordnance Survey on behalf of The controller of Her Majesty's Stationery Office. © Crown Copyright Ordnance Survey, National Grid Electricity - 100024241, National Grid Gas - 100024886
Contains Natural Resources Wales information © Natural Resources Wales and Database Right. All rights Reserved.

